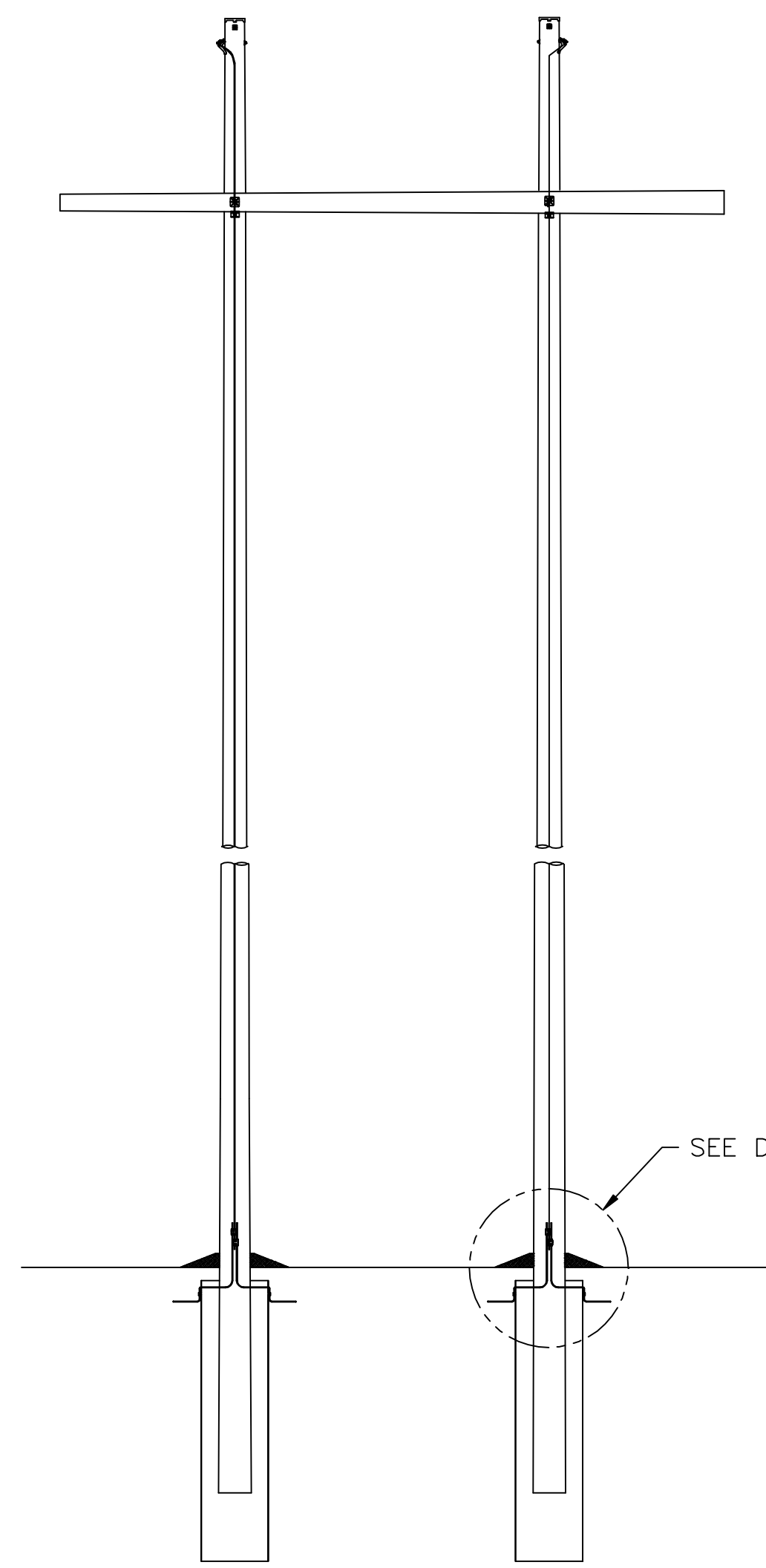
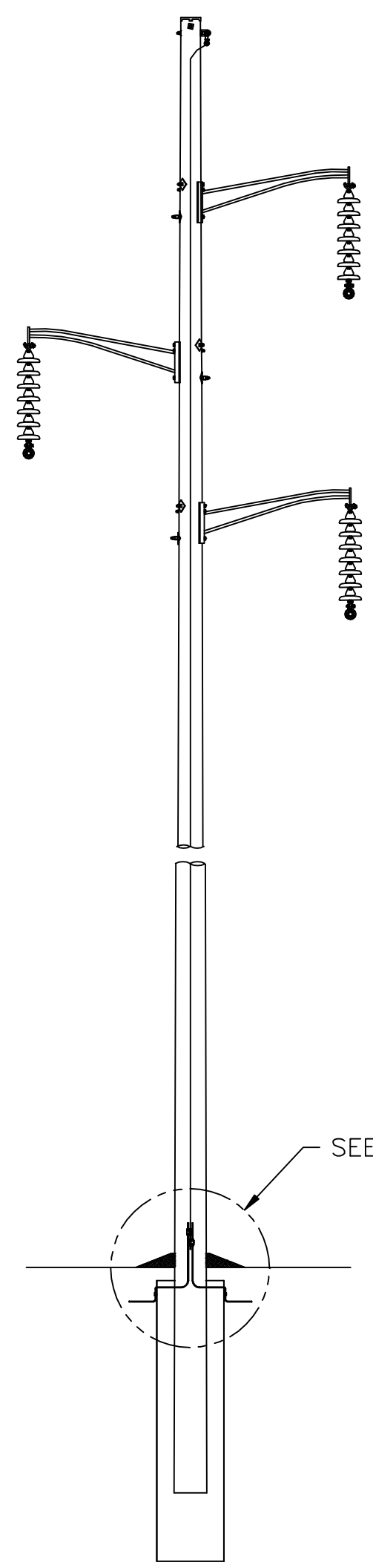


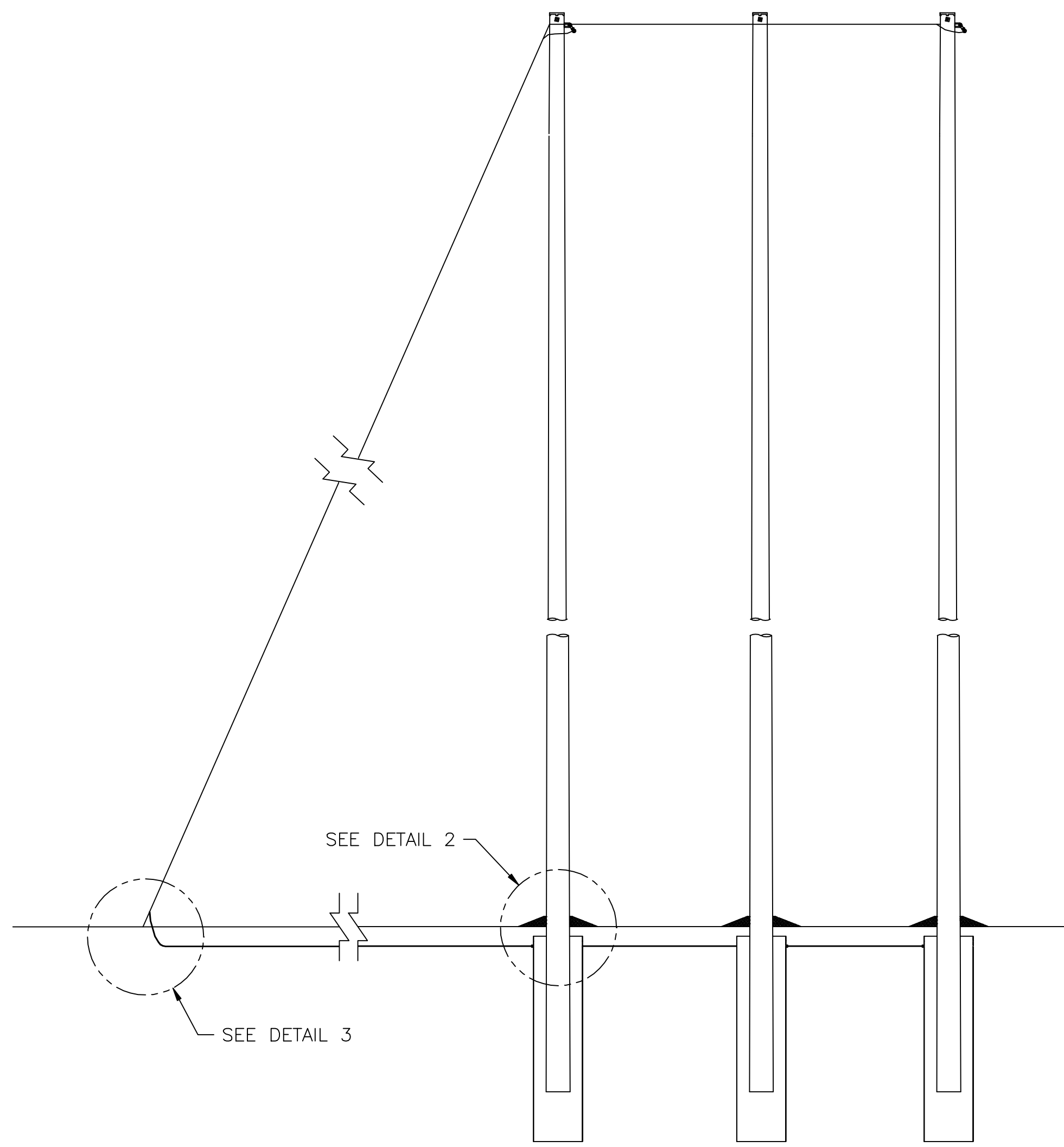
CONFIDENTIALITY STATEMENT: THIS DOCUMENT CONTAINS CONFIDENTIAL AND PROPRIETARY INFORMATION OF NATIONAL GRID. IT IS TO BE USED BY AUTHORIZED CONTRACTORS FOR NATIONAL GRID SOLELY IN CONNECTION WITH THE SPECIFIC PROJECT FOR WHICH IT HAS BEEN TRANSMITTED. ANY OTHER USE, ITS TRANSMITTAL TO THIRD PARTIES, OR ITS REPRODUCTION WITHOUT PRIOR EXPRESS WRITTEN AUTHORIZATION OF NATIONAL GRID IS STRICTLY PROHIBITED.



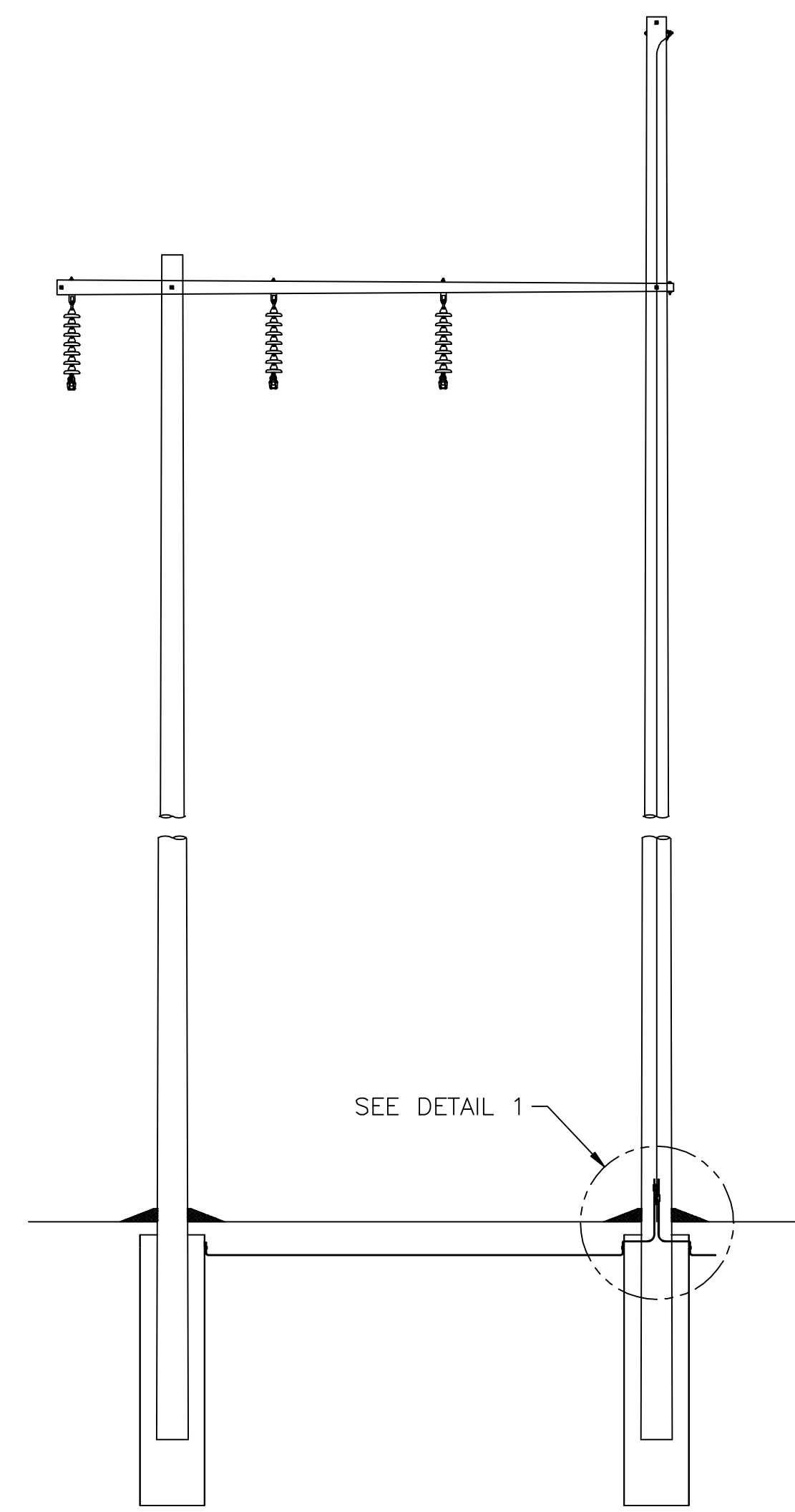
H-FRAME STRUCTURE



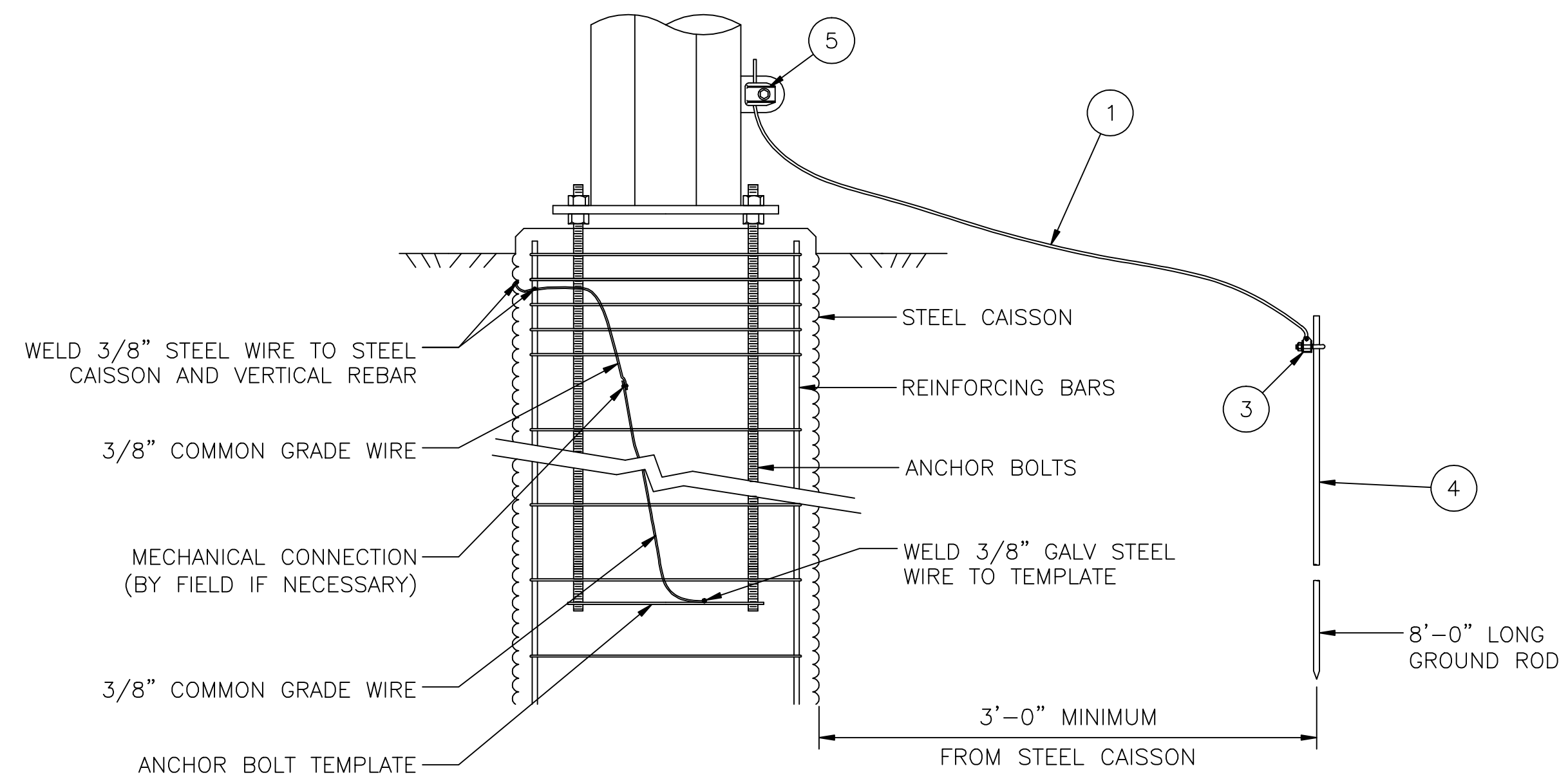
SINGLE POLE STRUCTURE



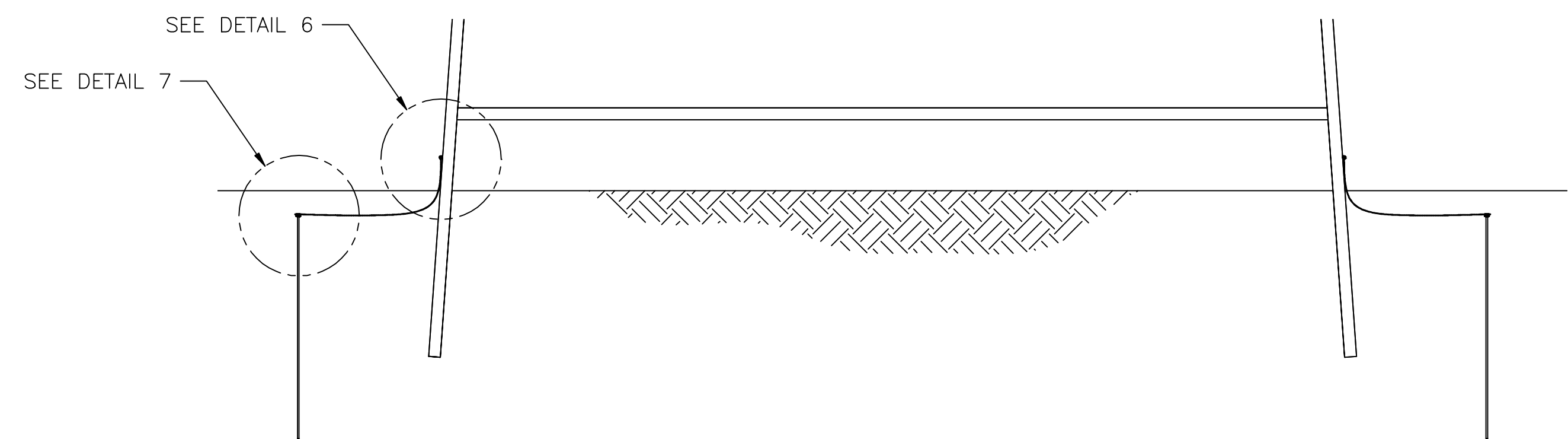
THREE POLE STRUCTURE



POLARM STRUCTURE



CAISSON



STEEL TOWER

VER	DATE	REVISION DESCRIPTION	REVISION APPROVED	VERSION
6	9/29/98	MATERIAL LIST QUANTITIES ADDED TO DRAWING.	WFD	
7	10/09/98	ADDED STORE CODE NUMBER TO ITEM NUMBER 7 IN THE MATERIAL LIST	WFD	
8	11/01/00	REVISIONS TO MATERIAL LIST AND STORE CODES.	WFD	
9	11/19/00	REVISIONS TO MATERIAL LIST AND STORE CODES.	WFD	
10	3/30/09	ADDED SHEETS 2 & 3; ADDED CULVERTS, REVISED/DELETED DETAILS ACCORDINGLY	JVE	
11			JVE	
12			JVE	

PREPARED BY	WFD	4/3/97
REVIEWED BY		
APPROVED BY		
SCALE	1" = 1'-0"	
SHEET	1	OF 3
INDEX		

nationalgrid

TRANSMISSION LINE STANDARD
GROUNDING DETAILS FOR
TRANSMISSION LINE STRUCTURES

CONFIDENTIALITY STATEMENT: THIS DOCUMENT CONTAINS CONFIDENTIAL AND PROPRIETARY INFORMATION OF NATIONAL GRID. IT IS TO BE USED BY AUTHORIZED CONTRACTORS FOR NATIONAL GRID SOLELY IN CONNECTION WITH THE SPECIFIC PROJECT FOR WHICH IT HAS BEEN TRANSMITTED. ANY OTHER USE, ITS TRANSMITTAL TO THIRD PARTIES, OR ITS REPRODUCTION WITHOUT PRIOR EXPRESS WRITTEN AUTHORIZATION OF NATIONAL GRID IS STRICTLY PROHIBITED.

TRANSMISSION STRUCTURE GROUND GRID CONFIGURATION PLAN VIEWS		
SINGLE POLE STRUCTURE	TWO POLE STRUCTURE	THREE POLE STRUCTURE
<p>GROUND ROD (TYPICAL 4 PLACES)</p> <p>10' FROM POLE</p> <p>INSTALL 4 GROUND RODS</p>	<p>GROUND ROD (TYPICAL 6 PLACES)</p> <p>10' FROM POLE</p> <p>INSTALL 6 GROUND RODS</p>	<p>GROUND ROD (TYPICAL 8 PLACES)</p> <p>10' FROM POLE</p> <p>INSTALL 8 GROUND RODS</p>
<p>COUNTERPOISE (NON-CONTINUOUS) (TYPICAL 2 PLACES)</p> <p>VARIES (SEE SPECIFICATION)</p> <p>INSTALL 2 STRIPS COUNTERPOISE</p>	<p>COUNTERPOISE (NON-CONTINUOUS) (TYPICAL 2 PLACES)</p> <p>VARIES (SEE SPECIFICATION)</p> <p>INSTALL 2 STRIPS COUNTERPOISE</p>	<p>COUNTERPOISE (NON-CONTINUOUS) (TYPICAL 2 PLACES)</p> <p>VARIES (SEE SPECIFICATION)</p> <p>INSTALL 2 STRIPS COUNTERPOISE</p>
<p>COUNTERPOISE (NON-CONTINUOUS) (TYPICAL 4 PLACES)</p> <p>SEPARATE AS FAR AS FIELD CONDITIONS ALLOW</p> <p>INSTALL 4 STRIPS COUNTERPOISE</p>	<p>SEPARATE AS FAR AS FIELD CONDITIONS ALLOW</p> <p>COUNTERPOISE (NON-CONTINUOUS) (TYPICAL 4 PLACES)</p> <p>INSTALL 4 STRIPS COUNTERPOISE</p>	<p>SEPARATE AS FAR AS FIELD CONDITIONS ALLOW</p> <p>COUNTERPOISE (NON-CONTINUOUS) (TYPICAL 4 PLACES)</p> <p>INSTALL 4 STRIPS COUNTERPOISE</p>

nationalgrid		PREPARED BY: WFD 4/3/97 APPROVED BY: _____ SCALE: 1" = 1'-0" SHEET: 3 of 3 INDEX: _____
TRANSMISSION LINE STANDARD GROUNDING DETAILS FOR TRANSMISSION LINE STRUCTURES	REVISION DESCRIPTION 6 9/29/98 MATERIAL LIST QUANTITIES ADDED TO DRAWING. 7 8/10/99 ADDED STORE CODE NUMBER TO ITEM NUMBER 7 IN THE MATERIAL LIST. 8 11/17/01 REVISED MATERIAL LIST AND STORE CODES. 9 11/19/01 REVISED MATERIAL LIST AND STORE CODES. 10 3/30/09 ADDED SHEETS 2 & 3; ADDED CULVERTS, REVISED/DELETED DETAILS ACCORDINGLY. 11 _____ 12 _____	VERSION 10