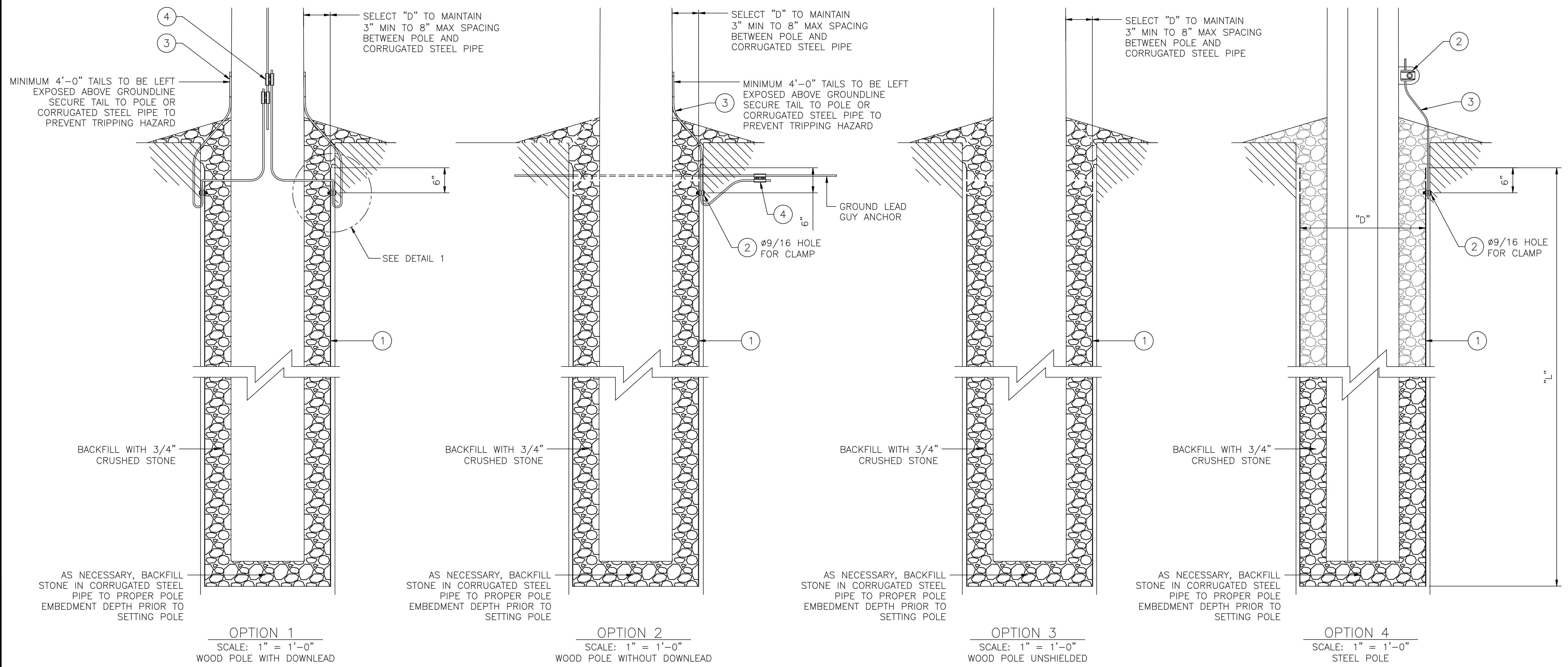


DETAIL 1
SCALE: 3" = 1'-0"

ITEM	QUANTITY				DESCRIPTION	ITEM ID
	OPT 1	OPT 2	OPT 3	OPT 4		
1	1	1	1	1	12 GA. CORRUGATED STEEL PIPE	PO
2	2	1		2	BRONZE GROUNDING CLAMP	5105146
3	AR	AR		AR	3/8" COMMON GRADE STEEL WIRE	5998530
4	2	1			BRONZE PARALLEL CLAMP	5962562

- NOTES:
- BRONZE FITTINGS TO BE USED WITHIN 1' ABOVE OR BELOW GROUNDLINE
 - DURING INSTALLATION, 4' TAILS OF GROUNDWIRE TO BE LEFT ABOVE GROUNDLINE WHERE SHOWN, AND SECURED SO AS TO PREVENT A SAFETY HAZARD
 - FOR WOOD POLES, SELECT "D" TO MAINTAIN 3" TO 8" SPACING BETWEEN POLE AND CORRUGATED STEEL PIPE. CORRUGATED STEEL PIPE LENGTHS ARE TO BE USED SUCH THAT THEY ARE BURIED AT LEAST AS DEEP AS POLES. BACKFILL INSIDE CORRUGATED STEEL PIPES AS NECESSARY TO ACHIEVE PROPER POLE EMBEDMENT DEPTH. FOR STEEL POLES, "L" AND "D" ARE SPECIFIED BY THE DESIGNER
 - TOP EDGE OF CORRUGATED STEEL PIPE SHALL BE BURIED BELOW GRADE. BACKFILL STONE SHALL BE MOUNDED ABOVE GROUNDLINE
 - WHERE CORRUGATED STEEL PIPES ARE INSTALLED IN ADVANCE OF POLE INSTALLATION, HOLE IS TO BE COVERED AND SECURED IN A METHOD ACCEPTABLE TO NATIONAL GRID
 - SEE DRAWING D-11679 FOR GROUNDING DETAILS



OPTION 1
SCALE: 1" = 1'-0"
WOOD POLE WITH DOWNLEAD

OPTION 2
SCALE: 1" = 1'-0"
WOOD POLE WITHOUT DOWNLEAD

OPTION 3
SCALE: 1" = 1'-0"
WOOD POLE UNSHIELDED

OPTION 4
SCALE: 1" = 1'-0"
STEEL POLE

TRANSMISSION STANDARD DETAILS FOR INSTALLATION OF WOOD AND STEEL POLES IN CORRUGATED PIPES	PREPARED BY JLC 3/26/07 APPROVED BY JME 3/26/07 SCALE 1" = 1'-0" SHEET 1 OF 1 INDEX	nationalgrid	VERSION 3 DATE 10/17/09 DESCRIPTION CORRECTED FOR 12 GA. CORRUGATED STEEL PIPE AND 3/8" COMMON GRADE STEEL WIRE.
	DATE 10/17/09 DESCRIPTION CORRECTED FOR 12 GA. CORRUGATED STEEL PIPE AND 3/8" COMMON GRADE STEEL WIRE.		
	DATE 10/17/09 DESCRIPTION CORRECTED FOR 12 GA. CORRUGATED STEEL PIPE AND 3/8" COMMON GRADE STEEL WIRE.		
	DATE 10/17/09 DESCRIPTION CORRECTED FOR 12 GA. CORRUGATED STEEL PIPE AND 3/8" COMMON GRADE STEEL WIRE.		

CONFIDENTIALITY STATEMENT: THIS DOCUMENT CONTAINS CONFIDENTIAL AND PROPRIETARY INFORMATION OF NATIONAL GRID. IT IS TO BE USED BY AUTHORIZED CONTRACTORS FOR NATIONAL GRID SOLELY IN CONNECTION WITH THE SPECIFIC PROJECT FOR WHICH IT HAS BEEN TRANSMITTED. ANY OTHER USE, ITS REPRODUCTION OR TRANSMISSION TO THIRD PARTIES, OR ITS REPRODUCTION OR TRANSMISSION TO ANY OTHER PARTY IS STRICTLY PROHIBITED.

PRINTED COPIES ARE NOT DOCUMENT CONTROLLED. FOR THE LATEST AUTHORIZED VERSION PLEASE REFER TO THE ENGINEERING DEPARTMENT DOCUMENTS CABINET IN DOCUMENTUM
 PRINTED 10/15/2009 3:00 PM